

VESSEL 微宿

重构自然的栖居

REDEFINE NATURAL DWELLING



VESSEL

HOMES
4 THE
HOMELESS

BUSSINESS BROCHURE 2023 Q3

微宿 VESSEL® 品牌简介

www.homes4thehomeless.org



微宿第五代产品列表

VESSEL GEN5 PRODUCT OVERVIEW



VESSEL S5

长*宽*高 Length*Width*Height:

8.5*3.3*3.3 m

建筑面积 Building area: 28.0 m²



VESSEL E5

长*宽*高 Length*Width*Height:

8.5*3.3*3.2 m

建筑面积 Building area: 28.0 m²



VESSEL E7

长*宽*高 Length*Width*Height:

11.5*3.3*3.2 m

建筑面积 Building area: 38.0 m²



VESSEL O5

长*宽*高 Length*Width*Height:

7.5*3.6*3.2 m

建筑面积 Building area: 27.0 m²



VESSEL V5

长*宽*高 Length*Width*Height:

7.5*3.3*3.2 m

建筑面积 Building area: 24.75 m²



VESSEL V7

长*宽*高 Length*Width*Height:

9.5*3.3*3.2 m

建筑面积 Building area: 31.35 m²

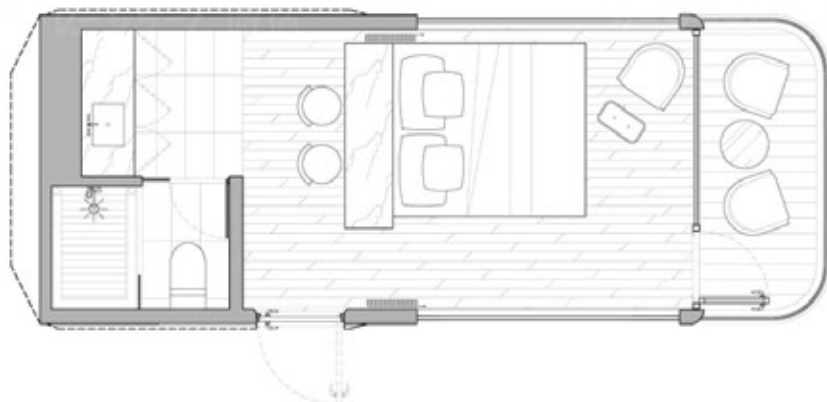
微宿标准产品介绍-VESEL 2023款S5 VESSEL STANDARD PRODUCT INTRODUCTION-VESEL S5



产品尺寸Product dimensions(L*W*H): 8.5*3.3*3.3 m
建筑面积Building area: 28.0 m²

微宿新款S5是继微宿2018年首款旗舰产品S5发布以来，历经4年于2022年推出的第二款S系列的产品。极具冲击感的坡屋顶造型延续了S系列的经典符号。微宿S5室内布局延续了E5室内平面布局的成功经验，同时使用了S系列新一代赛博科幻风格的外观，紧凑的尺寸也使得S5成为新的最具性价比产品。

Following the release of the first flagship product S5 in 2018, VESSEL S5 launched in 2022 after 4 years. The strongly visually striking sloping roof is the symbol of S series. Borrowed from the layout of E5, the area of bathroom and bedroom has been expanded, at the same time, the compact size of the S5 makes it the most cost-effective product of the new generation of S series



微宿标准产品介绍-VESSEL 2023款S5
VESSEL STANDARD PRODUCT INTRODUCTION-VESSEL S5



VESSEL

HOMES
4 THE
HOMELESS



NEW
新品上市

微宿标准产品介绍-VESSEL E5

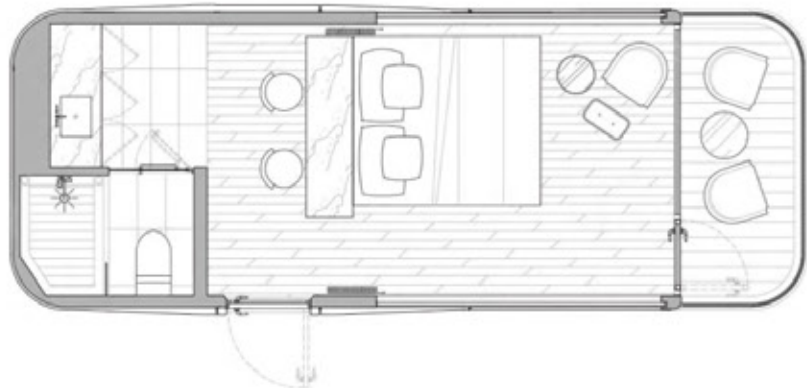
VESSEL STANDARD PRODUCT INTRODUCTION-VESSEL E5



产品尺寸Product dimensions(L*W*H): 8.5*3.3*3.2 m
建筑面积Building area: 28.0 m²

微宿E5型客舱是至今最受欢迎，最畅销的微宿产品。2022款微宿E5宽度升级到3.3米，室内沿用经典的标准酒店大床布局，干湿分离卫浴，大面宽洗手台，还有奢侈的3.3米大阳台，都是微宿E5成为最畅销型号的原因。

So far, E5 prefab house has been the most popular and best-selling product of VESSEL. The width of the 2022 version has been upgraded to 3.3m. The interior design adopts the classic standard king bed, separating wet and dry areas in the bathroom, spacious washbasin, and luxurious balcony, which makes E5 the best selling model.



VESSEL
HOMES
4
THE
HOMELESS



微宿标准产品介绍-VESSEL E7 VESSEL STANDARD PRODUCT INTRODUCTION-VESSEL E7

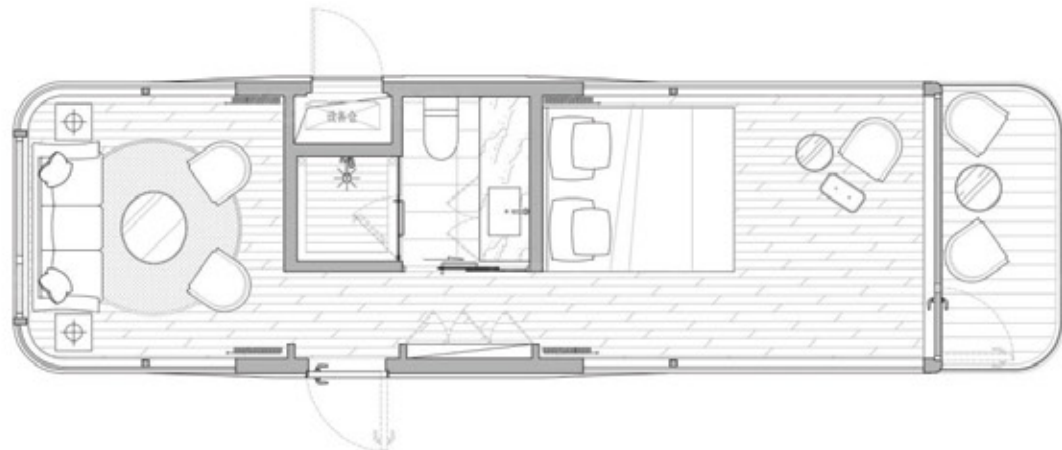


产品尺寸Product dimensions(L*W*H): 11.5*3.3*3.2 m

建筑面积Building area: 38.0 m²

微宿E7在2019年深圳高新科技交易博览会上首次发布，就登上了央视新闻直播间的舞台。2022款微宿E7宽度升级到3.3米，室内面积更加舒适，前后一室一厅的布局已然成为行业高端露营住宿产品的经典范式。

VESEL E7 was first launched at the Shenzhen High-tech Fair in 2019 and appeared in the CCTV news livestream room. The width of the 2022 version has been upgraded to 3.3m, which makes the interior layout cozier. The floor plan of bedroom / bathroom / living room has become a classic design in the high-end camping accommodation industry.



www.homes4thehomeless.org



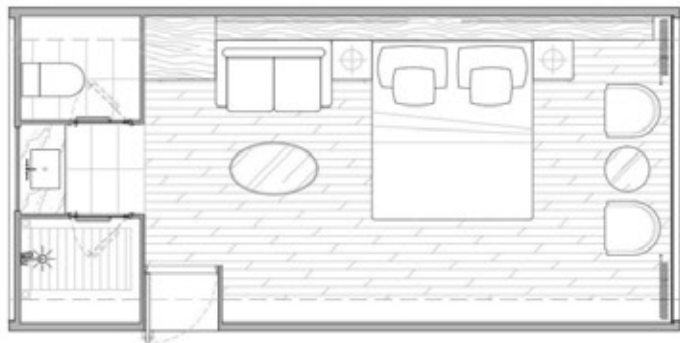
微宿标准产品介绍-VESSEL O5 VESSEL STANDARD PRODUCT INTRODUCTION-VESSEL O5



产品尺寸Product dimensions(L*W*H): 7.5*3.6*3.2 m
建筑面积Building area: 27.0 m²

O5 极致性价比产品，主体采用热镀锌钢+氟碳烤漆航空铝，几何语言清晰利落，平面布局功能合理，具有超大空间舒适度，超大视野全景天窗，超强空间延展性的特点。

O5 is the most cost-effective product, the main construction adopts hot-dip galvanized steel and fluorocarbon-coated aviation aluminum shell. The exterior and interior are well-designed, giving you a more comfortable living experience. With panoramic window and star-gazed skylight, the views are expanded, making you feel like living in the nature.



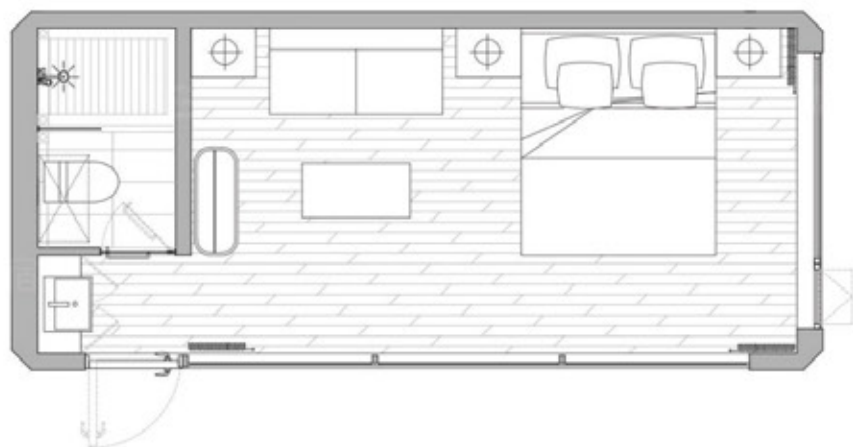
微宿标准产品介绍-VESSEL V5 VESSEL STANDARD PRODUCT INTRODUCTION-VESSEL V5



产品尺寸Product dimensions(L*W*H): 7.5*3.3*3.2 m
建筑面积Building area: 24.75 m²

V 型号，灵感来源于自然界的黑豹，外观色彩与大自然能很好地融为一体。V系列在转角处采用生态护线设计手法，整体框架流线简单明了，布局传统高效，适应场景广泛。

V model is inspired by wild black panther, its exterior design blends well with nature. It adopts the ecological protection design at the corners, the overall frame design is simplified, and the layout is traditional but efficient, which makes it suitable for a lot of scenarios.



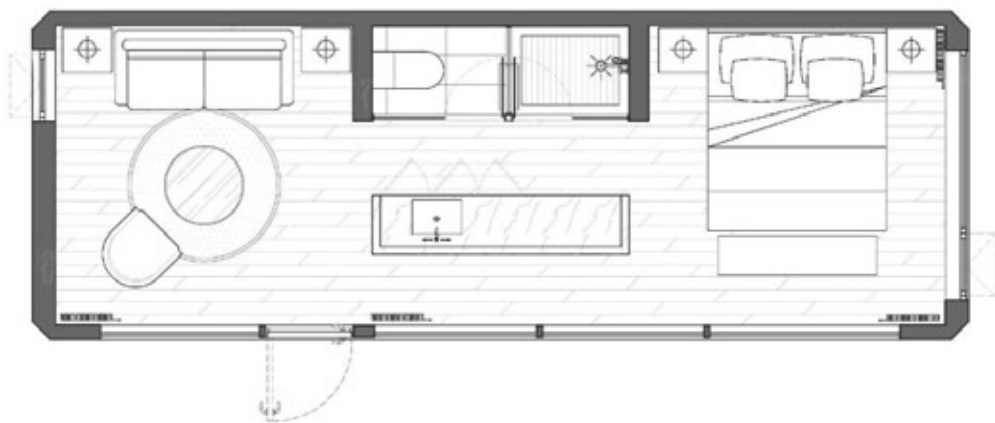
微宿标准产品介绍-VESSEL V7 VESSEL STANDARD PRODUCT INTRODUCTION-VESSEL V7



产品尺寸Product dimensions(L*W*H): 9.5*3.3*3.2 m
建筑面积Building area: 31.35 m²

V 型号，灵感来源于自然界的黑豹，外观色彩与大自然能很好地融为一体。V系列在转角处采用生态护线设计手法，整体框架流线简单明了，布局传统高效，适应场景广泛。

V model is inspired by wild black panther, its exterior design blends well with nature. It adopts the ecological protection design at the corners, the overall frame design is simplified, and the layout is traditional but efficient, which makes it suitable for a lot of scenarios.



微宿专利结构体系

VESSEL patent structure system



专利号:

Patent NO:

201920418867.7

微宿专利外壳模块卡槽安装构造, 多重防水, 即使在连接处也能保证低导热性能。

Vessel patented housing module card slot mounting construction, multiple waterproof, ensures low thermal conductivity even at the joint.

钢结构厚度为保温层安装创造了绝佳的空间, 使得微宿整体达到极高的热工性能。
The thickness of the steel structure creates an excellent space for the installation of the insulation layer, which makes the micro-sink as a whole achieves extremely high thermal performance.



专利号:

Patent NO:

201920418861.X

微宿专利拼接式钢结构房屋安装框架, 实现快速精准安装, 并具备高效力学性能。

Vessel patented spliced steel structure housing installation frame for fast and precise installation with high mechanical properties.

专利号:

Patent NO:

201920423283.9

微宿针对不同地区的气候特点, 提供多种全景落地玻璃的技术方案, 在舒适环保的前提下尽享极致视野。

Vessel offer a wide range of panoramic floor-to-ceiling technical solutions for the climatic characteristics of different regions, and enjoy the ultimate in comfort and environmental protection.

针对极寒地区, 微宿可加配电热式/水暖式地暖, 结合高热工构造保障室内舒适温暖。

For extremely cold areas, the vessel can be equipped with distributed heat/heat-heating floor heating, combined with a high thermal structure to ensure the comfort and warmth of the interior.

微宿标准版材料

VESSEL premium material





运输阶段

VESSEL 系列产品标准采购合同包含运输费用，由我司统一安排货车运输至项目现场。

标准货车为13.5m 长半挂车，运输宽度为3m，运输高度不大于4.2m，可全国高速公路自由通行。

Transportation

The product will be loaded on a delivery vehicle (standard semi-trailer, Length: 13.5m, Width: 3m, Height: $\leq 4.2\text{m}$, arranged by our company) and shipped by a flat rack-container.

吊装阶段

货物抵达现场后，需要客户自行联络当地的吊车服务，我司技术团队会提前抵达现场指导。

VESSEL 全系列产品吊装重量在6至10吨，建议选用不小于25吨级别的吊车装卸。

Hoisting

After arriving the project site, the product should be hoisted by the local crane service, and remote guidance will be provided by our technical team. The weight of the product is between 6 to 10 tons. It is recommended to arrange ≥ 25 tons for loading and unloading.

安装阶段

安装产品前，客户需按照我司VESSEL 产品标准基础水电图纸，完成给水、给电、排污管线及承重基础的现场工程。在我司技术员的指导下，精准落位到设计的安装点位，接通水电后，完成通水通电测试，交由客户验收。

Installation

Before installation, the plumbing system and electrical system and foundation should be prepared in accordance with the standard drawings provided by our company. Place the product in the designated location under the guidance of our technicians, and test the performance after the installation is done.

品牌优势

VESSEL ADVANTAGE



露营太空舱
品类开创者

微宿VESSEL®自2018年以来陆续推出S5/E5/E7/V5/O5等多款行业内具有代表性的太空舱产品,并开创了太空舱品类跻身于高端露营装备行业的全新格局。

VESSEL pioneering products creating a new pattern which Space Capsule (Pre-fab house) ranks among the luxurious camping equipment industry.



图片来源：2019年深圳高科技交易博览会,中央电视台13号频道,新闻直播间报道画面

[Picture Source]: CHINA HI-TECH FAIR 2019 in Shenzhen, Live footage from CCTV Channel 13 (news channel)



高保温性能
专利体系

微宿VESSEL®在各种极端气候的实践中,专注产品研发。在解决微型装配式建筑保温难题上,形成由实用新型专利、外观设计专利、发明专利组成的专利结构体系。

VESSEL has been doing up-gradation of products, especial attention to products performance in extreme climates.



图片来源：2022年2月,青海祁连雪山脚下,微宿研发团队极寒气候保温性能测试实验

[Picture Source]: In February 2022, at the foot of Qilian Snow Mountain in Qinghai Province, China, VESSEL R&D team conducted insulation performance test in extremely cold climate last a whole week.



新媒体
顶流品牌

微宿VESSEL® 自媒体全网粉丝已突破200万, #微宿 #微宿太空舱 话题播放量突破4亿微宿VESSEL®直击露营度假年轻人群消费需求,塑造自媒体时代新的诗和远方。

The fans of VESSEL on the social media (such as Wechat\TIKTOK) have exceeded 2 million.



图片来源：2021年6月,佛山市顺德区欢乐海岸,“微宿 X 林氏木业”网络直播创下3000万销售额

[Picture Source]: In June 2021, OCTHARBOUR, Shunde District, Foshan City, "VESSEL X LINSY (a famous furniture brand in China)" online live broadcast recorded 30 million sales



五年交付量
全国第一

微宿VESSEL®已在全国各省市落地150余个项目,交付产品数量突破1000台,在全国广袤的各地气候下,有着丰富的实际交付与售后服务经验,在行业内遥遥领先。

VESSEL has delivered more than 150 projects in China's cities and provinces, delivery quality is far ahead than others in the industry.



图片来源：2022年7月,微宿交付首次突破1000台,南沙工厂夜间灯火通明,加班生产实景照片

[Picture Source]: In July 2022, the delivery of VESSEL exceeded 1,000 units. The Nansha Factory was brightly lit at night and worked overtime to produce products (real-life photos).



出口全球
远销十七国

微宿VESSEL®作为中国设计、中国制造的国潮品牌,突破了当前装配式绿色建筑行业服务半径的桎梏,远销世界各地,在世界露营市场舞台上掀起“新中国制造”的风潮。

VESSEL have sold more than 17 countries, setting off the trend of new "Made in China" in international camping market.



图片来源：2023年2月,微宿文旅董事会销售年度总结汇报,海外已落地项目示意图

[Picture Source]: In February 2023, after statistics, overseas projects that have been successfully landed are shown in the map above.

微宿项目地图-国内

VESSEL PRODUCE MAP 2023.06

32个省级行政区

32 PROVINCES

90个城市

90 CITIES

150+个落地项目

150+ PROJECTS



微宿项目地图-海外

VESSEL PRODUCE MAP - OVERSEA



产品适用场景

VESSEL PRODUCT APPLICABLE SCENES

www.homes4thehomeless.org



VESSEL

**HOMES
4 THE
HOMELESS**



VESSEL 微宿

VESSEL 微宿

VESSEL 微宿

VESSEL 微宿

VESSEL 微宿

产品适用场景

VESSEL PRODUCT APPLICABLE SCENES

微宿

VESSEL 微宿

VESSEL 微宿

VESSEL 微宿

VESSEL 微宿

VESSEL 微宿

VESSEL 微宿

VESSEL 微宿

VESSEL 微宿

VESSEL 微宿

VESSEL 微宿

微宿

VESSEL 微宿

VESSEL 微宿

VESSEL 微宿

VESSEL 微宿

VESSEL 微宿

VESSEL 微宿

VESSEL 微宿

VESSEL 微宿

VESSEL 微宿

VESSEL 微宿

微宿

VESSEL 微宿

VESSEL 微宿

VESSEL 微宿

VESSEL 微宿

VESSEL 微宿

VESSEL 微宿



VESSEL

**HOMES
4 THE
HOMELESS**

产品适用场景

VESSEL PRODUCT APPLICABLE SCENES



VESSEL

HOMES
4 THE
HOMELESS

www.homes4thehomeless.org

VESSEL 微宿

VESSEL 微宿

落地项目展示

VESSEL PROJECTS

微宿

VESSEL 微宿

VESSEL 微宿

VESSEL 微宿

VESSEL 微宿

VESSEL 微宿

VESSEL 微宿

VESSEL 微宿

VESSEL 微宿

VESSEL 微宿

VESSEL 微宿

微宿

VESSEL 微宿

VESSEL 微宿

VESSEL 微宿

VESSEL 微宿

VESSEL 微宿

VESSEL 微宿

VESSEL 微宿

VESSEL 微宿

VESSEL 微宿

VESSEL 微宿

微宿

微宿

VESSEL 微宿

微宿

VESSEL 微宿

VESSEL 微宿

VESSEL 微宿

www.homes4thehomeless.org



VESSEL

HOMES
4 THE
HOMELESS

微宿

微宿

VESSEL 微宿

VESSEL 微宿

VESSEL 微宿

VESSEL 微宿

落地项目展示
VESSEL PROJECTS



VESSEL
HOMES
4 THE
HOMELESS

www.homes4thehomeless.org

落地项目展示
VESSEL PROJECTS



www.homes4thhomeless.org

落地项目展示
VESSEL PROJECTS

www.homes4thehomeless.org



落地项目展示
VESSEL PROJECTS



www.homes4thhomeless.org



VESSEL
HOMES
4 THE
HOMELESS





工厂与生产

FACTORY AND PRODUCTION

现自有工厂总面积约20000平方，共有标准生产机位150个，月交付量可达160台以上。生产核心团队均为品牌创始人员，秉承产品至上、服务客户为目标的生产经营理念，产品每一道生产交付工序均经严格把控，使得产品品质及落地效果在行业内遥遥领先。

The factory covers an area of 20,000 square meters, and has 150 standard production stands. The production capacity is 160 units per month. The core team is composed of the founders of VESSEL brand. Adhering to the idea of product first and best customer service, every production and delivery process of the product is under strictly controlled, so that the product quality are far ahead in the prefab house industry.



奖项与证书

AWARDS AND CERTIFICATES

荣誉奖项

Awards

中国建筑科技行业创新科技先锋企业

中国建筑科技行业先进企业

2018 IDG Asia MIC 全球移动互联网开发创意大赛（广州站）冠军

2018-2019 IDG Asia MIC 全球移动互联网开发创意大赛全球总决赛冠军

2019 中国创新创业成果交易会技术创新成长企业

2019中国建筑科技行业 创新科技先锋企业

2020年度文旅行业最美建筑产品 第一名

2020深圳环球设计大奖SDA特别奖-全球抗疫产品设计奖 优秀奖

2020 景筑奖 民宿酒店最佳应用示范案例

2020年度博鳌国际旅游奖 年度民宿奖

2020年度彭州市龙门山民宿协会 优宿奖

2021古树文明与人居未来国际建筑设计竞赛 优秀奖

2021年 被文旅部评为全国文化和旅游装备技术提升优秀案例

2021年 获得海南国际旅游装备博览会 优秀参展企业

2022年 高新技术企业

2022年 旅游出行行业创新及服务精品案例

2022年 成为国际山地旅游联盟会员

知识产权&认证

Intellectual property & authentication

ISO9001 质量体系认证

ISO9001 Certificate of Quality Management System

产品结构安全性检测证书

Certificate of Product Construction Safety Test

欧盟 CE 质量认证

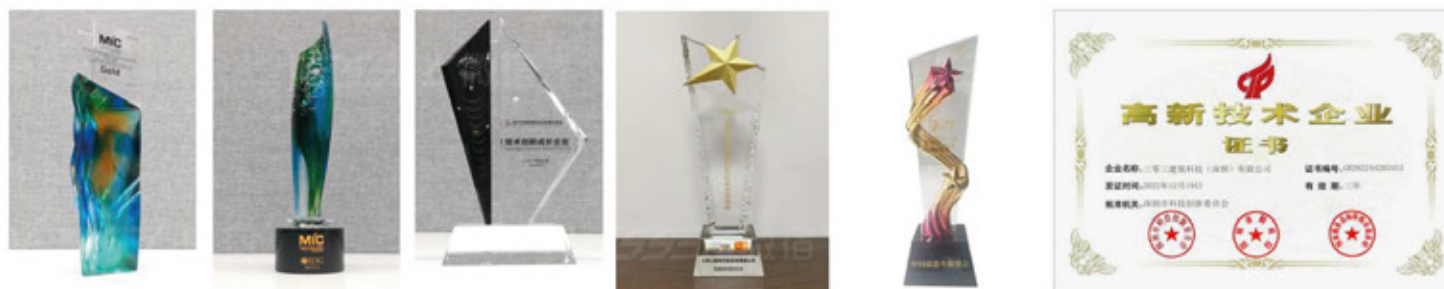
EU CE Quality Certification

微宿、VESSEL、微舍、微宿客舱等多行业商标

Multiple trademarks including 微宿、VESSEL、微舍、微宿客舱 etc.

发明、实用新型、外观等多项专利

Invention Patents, Practical Patents, Design patents





广东微宿文旅发展有限公司

Guangdong VESSEL Cultural Tourism Development, Ltd.



电话: 400-8090-303

TEL.: 400-8090-303

网址: www.303vessel.com

WEB.: www.303vessel.com

地址: 佛山市南海区狮山镇

ADD.: Shishan Town, Nanhai District, Foshan City, Guangdong, China.



VESSEL

**HOMES
4 THE
HOMELESS**